

Try the experience of buying food in 2015. Pop to the supermarket to grab your desired products, as long as they are in stock! Then direct yourself to pay at the till before carrying them home.



Dress up as an oil driller to go drill for petroleum, and enter the production process of a vehicle car, thanks to the hyperreal Virtual Reality designed by StudioFutu.

In the Mane Learner pavilion, you can virtually visit "The British Library", the biggest historic collection of written works, with more than 170million items. Learn about the "Dewey Decimal System" method, devised to store and catalogue "books" inside libraries, when reading materials were still stored in physical spaces. A 360 experience. [Guided tours every 20 minutes. From 10am to 6pm.]



Don't miss the chance to build, and take home, your own mini "Banjo", an analog stringed musical instrument! for the great price of 0.0050 BTC.

"Handheld Memoirs" is the new, touching installation of the international artist Will BeFogotten, which brings to life each of the 799 ancient smartphone devices constituting the installation. Step inside the cubic chamber, be captured by the screens and their owners' individual settings.

MAIN ATTRACTIONS

TRAVEL 100 YEARS IN THE PAST.

Celebrating the last century of human history, the Science Museum takes you back in time with this unique exhibition.

Our 2nd floor gallery will reveal many aspects of the lives of early 21st century humans, and some of their obsolete customs.

Explore the Old language archives (📖), and find out how the verbal communication used to be structured and written in dictionaries.

Discover the effect of incorrect ideas on dieting, and inspect the shelves of a replicated genuine Supermarket shop (🛒). Encounter unusual garments of the 2000's human. Make sure you don't miss the unforgettable screen devices installation by Will BeFogotten (👁️).

2015

INFORMATIONS:

[correct at time of print]

Opening times:
24 Hours
(Last kids admission at 8.00 pm)

Attractions are charged whenever you see the (💰) symbol

Join the conversation by following us on:
[@Minus100sm](#)

We thank you for your support and involvement as we develop the museum for the future.

To donate a contribution of any kind, visit the virtual platform addressed:
sciencemuseum2115.co.uk



Note: This paper leaflet was designed following the usual aesthetic canons of museums at that time.

MINUS ONE HUNDRED



WEARABLE OBJECTS



Explore body garments of the time, and their subliminal social “status” meanings: from trainers, a symbol of the contemporary youth subculture, with the iconic hieroglyphic signs on the sides and the patterned footprints left on their route.

Find out how a simple piece of cloth tied around the neck was considered a symbol of formal wear, and could limit someone to a particular situation or place.

Come across the tradition of tattooing; where people requested permanent drawings on their bodies.

Test by yourself the thrill of seeing through the last analog glasses used to distort reality, primitive precursors of the current virtual glasses.

Scroll through the millions of pictures on our databases, which catalogue the fashion across the years.

SCREENS AND COMMUNICATION DEVICES



Have a look, and try by yourself, the bulky 2D “touch screen” communication devices. Will BeForgotten’s touching interactive installation, “Handheld Memoirs”, allows you to try operating these ancient devices. By touching and swiping on the surface of flat screens, you can browse personal lives and customs of millennials. While exploring the various “Apps” and their uses, you can revive how the personal settings, interests and interrelations.

Thanks to special chemical treatment methods the original owner’s fingerprints are preserved on the devices screens, providing us with extra information about the identity of the owner, and a operative trace.

NUTRITION

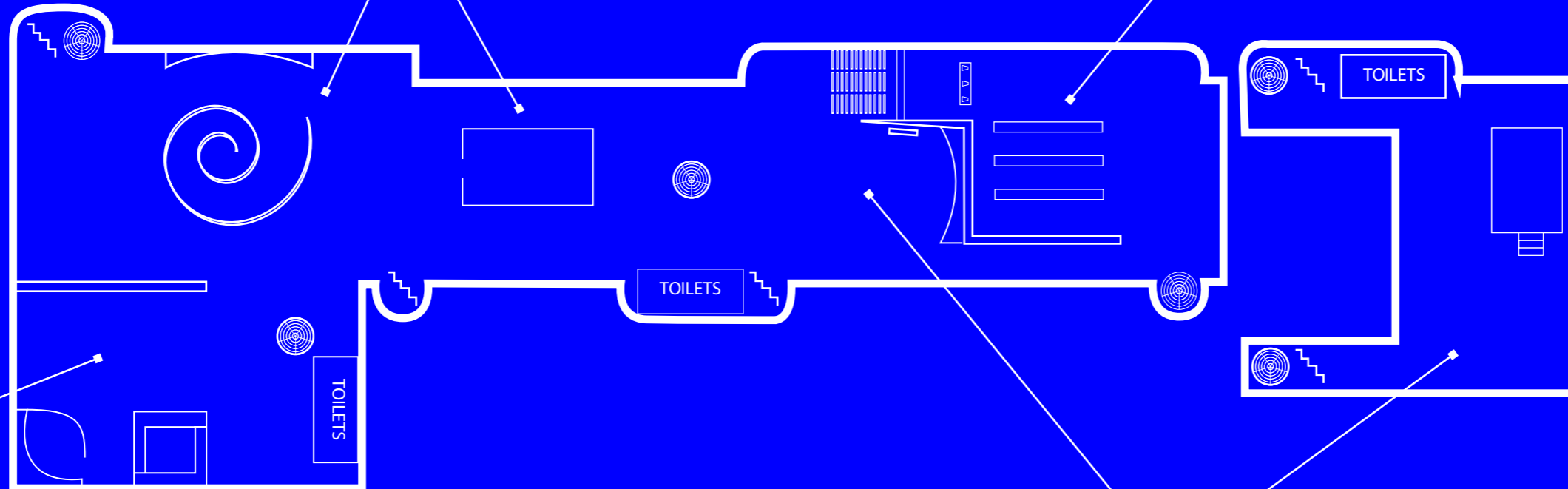


Visit this appetising Nutrition section and get to know the foods and eating habits of 21st century people, a time when lifestyle still had not adapted to climate change, and many foods had organic origins!

Discover the variety of animals they used to kill and eat, before the global ban on killing animals.

Find out about drinking water, when it was still drawn from natural sources and packed in small plastic bottles, and with no added flavours to it!

Experience the Supermarket shopping experience, where you had to go and purchase items in person and carry them home, with packaging which is a loyal reproduction of the original products.



MUSIC & FUN



Travel back in time and enjoy the delights of our Virtual Fun Van. Interact in a time when social customs, and convivial situations concerning musical instruments still required a physical and live audience to bring an atmosphere. Select a concert or festival from our vast international database and “feel the vibes” of thousands of people gathered together.

© Assemble and take home your own mini “Banjo”, a stringed analog musical instrument, which sounds are palpable at touch.

(only 0.0050 - bitcoins).

ENERGY AND RESOURCES:

Discover the energy sources used before the Energy Crisis of 2068. Clothe yourself as an oil driller and go drill for petroleum, a nonrenewable energy-rich fossil fuel, which caused wars, accidents, and environmental disasters. Follow the full production process of energy extrapolation, of its conversion into energy, and into transportation fuel.

Get involved in a live streamed debate explaining the history of those energies we have not been able to renew.

LANGUAGE AND VERBAL TRADITION:



Indulge yourself in over 6,500 languages spoken in the early 2000s, thanks to our unique archive for dictionaries. Explore how more primitive languages were formed and organised in the dictionary “book”, before the use of emoji was recognised as language!

Learn about the libraries elaborate method called “Dewey Decimal System”, used to catalogue physical books, journals, newspapers, magazines, databases, maps, prints, drawings and much more, at a time when many reading materials were still stored in physical spaces.

Virtually visit the biggest historic building of the “British Library”, in the ‘Wane Learner’ pavilion.

Guided tours every 20 minutes. From 10am to 6pm.